

# Vesuvio - ITALY

## Fire - Situation as of 14/07/2017

### Grading Map

#### Cartographic Information

1:17000

Full color ISO A1, high resolution (300 dpi)

Grid: WGS 1984 UTM Zone 33N map coordinate system  
Tick marks: WGS 84 geographical coordinate system

#### Legend

##### Crisis Information

###### Fire Grading

- Destroyed
- Highly Damaged
- Negligible to slight damage

###### Building Block Grading

- Moderately Damaged [40-69%]
- Negligible to slight damage [1-39%]

###### General Information

- Area of Interest
- Not Analyzed

##### Administrative boundaries

- Municipality

- Populated Place

##### Hydrology

- Reservoir
- Sea / Ocean

##### Physiography

- Contour lines and elevation (m)

##### Industry / Utilities

- Quarry
- Processing Facility
- Storage Depot

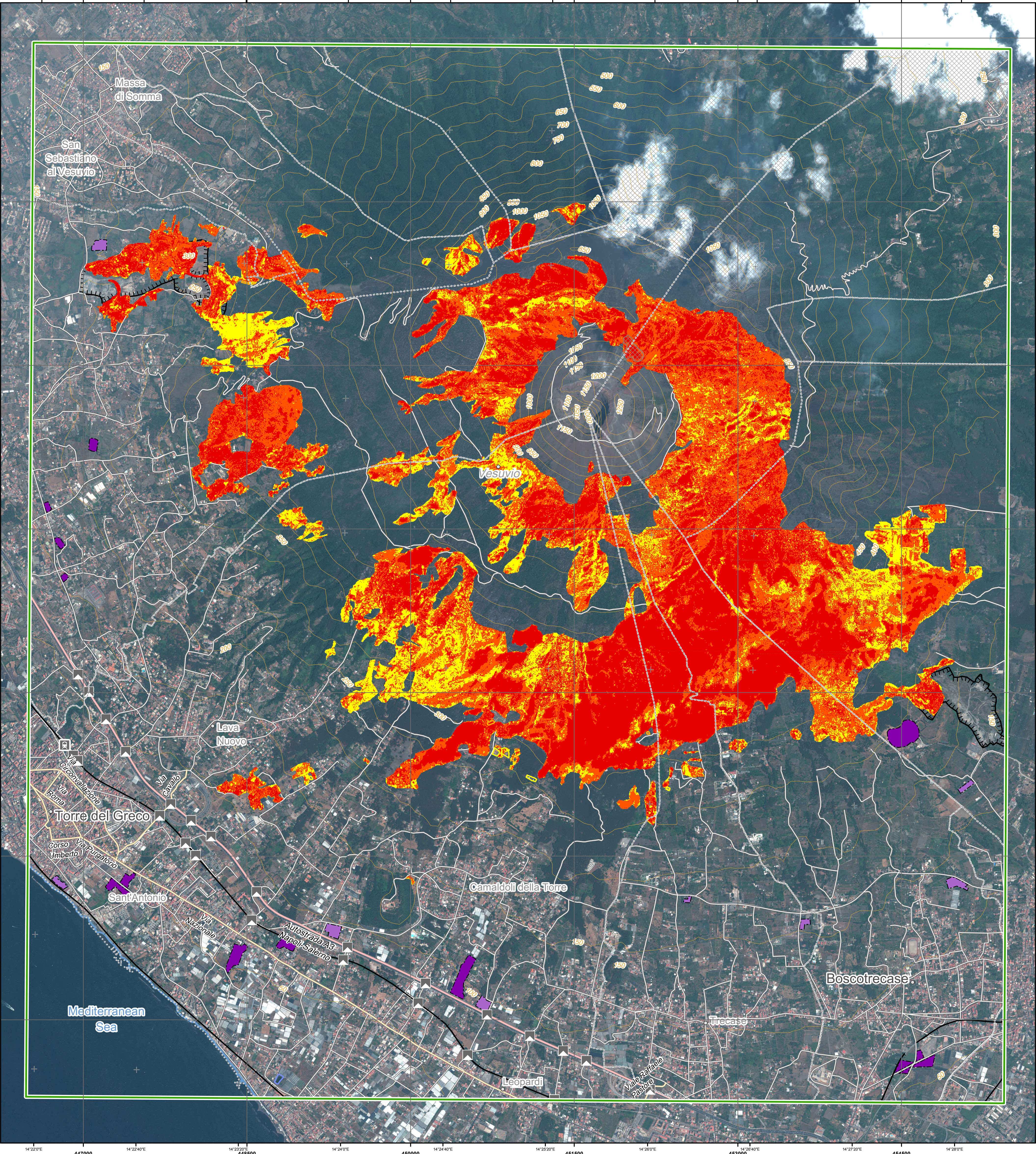
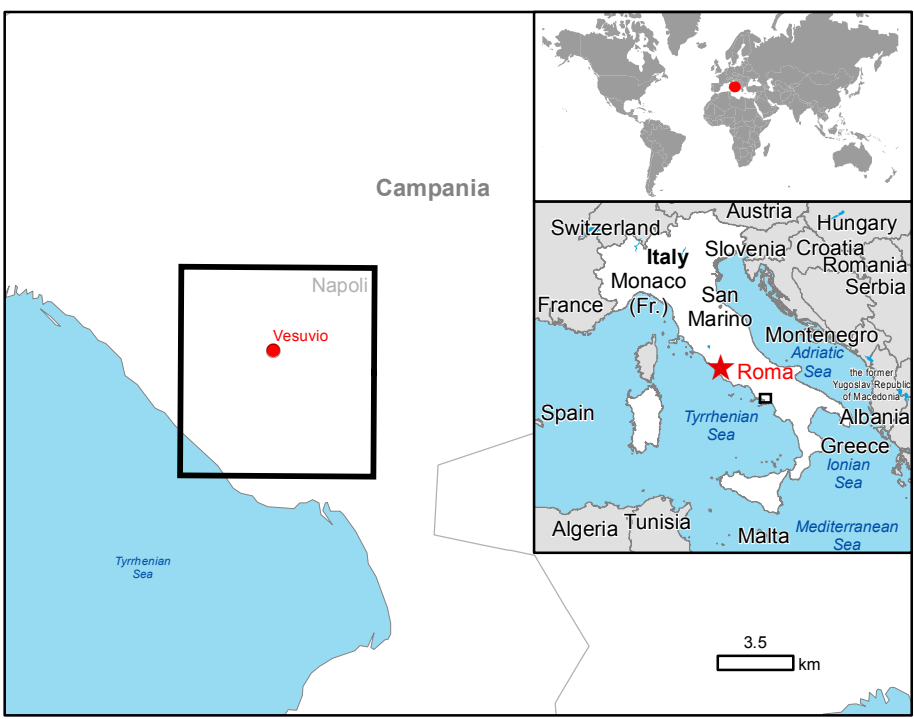
##### Transportation

- Bridge
- Station
- Railway
- Motorway
- Secondary Road
- Local Road

##### Land use - Land Cover

Features available in vector data

Consequences within the AOI							
	Unit of measurement	Destroyed	Highly damaged	Moderately damaged	Negligible to slight damage	Total affected	Total in AOI
Burnt area	ha	870.4	687.3	0.0	241.0	1798.7	
Estimated population	No. of inhabitants	0	0	0	69	0	102142
Settlements	Residential	ha	0	0	0	0	1473.1
	Agriculture	ha	0	0	0	0	147.8
	Cemetery	ha	0	0	0	0	5.7
	Institutional	ha	0	0	0	0	0.2
	Medical	ha	0	0	0	0	6.0
	Multi-functional	ha	0	0	0	0	11.5
	Recreational	ha	0	0	0	0	12.7
	Religious	ha	0	0	0	0	1.0
Transportation	No.	0	0	0	0	0	26
	Stations	No.	0	0	0	0	1
	Motorways	km	0	0	0	0	7.79
	Secondary roads	km	0	0	0	0	9.2
	Local roads	km	0	0	0	0	146.8
Utilities	Storage depot	ha	0	0	0	0	20
	Processing facility	ha	0	0	0	0	8
	Quarry	ha	0	0	0	0	81
Land use	Bare soil	ha	30.5	26.9	3.3	60.7	257.1
	Cropland	ha	40.7	42.9	0	75.3	101.0
	Scrub	ha	358.4	302.2	0	735.9	1949.0
	Woodland	ha	429.9	307.8	0	142.1	879.8
							3095.7



#### Map Information

During recent weeks almost the whole Italian National Territory has suffered a period characterized by very high temperatures and an absence of significant rain. Exacerbated by these conditions numerous fires are affecting Italy, most specifically in southern areas. Several fires are affecting large forested areas and, in certain cases, fires are threatening inhabited areas. Damages to infrastructures, public and private structures have occurred as have temporary evacuations due to risk to life.

The present map shows the damage grade assessment in the area of Vesuvio (Italy). The thematic layer has been derived from post-event satellite image by means of visual interpretation. The estimated geometric accuracy is 5 m CE90 or better, from native positional accuracy of the background satellite image.

#### Data Sources

Pre-event image: GeoEye © Digital Globe, Inc. (2016) (acquired on 26/04/2016 at 10:01, GSD 0.5 m, approx. 1% cloud coverage in AOI, 21.8° off-nadir angle) provided under COPERNICUS by the European Union and ESA.  
Post-event image: GeoEye © Digital Globe, Inc. (2017) (acquired on 14/07/2017 at 10:02, GSD 0.5 m, approx. 2% cloud coverage in AOI, 11.4° off-nadir angle) provided under COPERNICUS by the European Union and ESA.  
Base vector layers: OpenStreetMap © OpenStreetMap contributors, Wikimapia.org, GeoNames 2015, refined by the producer.  
Inset maps: JRC 2013, © EuroGeographics, Natural Earth 2012, CCM River DB © EUJRC2007, GeoNames 2013.  
Population data: Landsat 2010 © UT BATTELLE, LLC

#### Disclaimer

Products elaborated in this Copernicus EMS Rapid Mapping activity are realized to the best of our ability, within a very short time frame, optimising the available data and information. All geographic information has limitations due to scale, resolution, date and interpretation of the original sources. The map and the information content are derived from satellite data without in situ validation. No liability concerning the contents or the use thereof is assumed by the producer and by the European Union. The map and the information content are derived from satellite data without validation with ground data.  
Map produced by GAF AG released by e-GEOS (ODO).

For the latest version of this map and related products visit  
<http://emergency.copernicus.eu/mapping/list-of-components/EMSR213>

[ems-rapid-mapping@jrc.ec.europa.eu](mailto:ems-rapid-mapping@jrc.ec.europa.eu)

© European Union  
For full Copyright notice visit <http://emergency.copernicus.eu/mapping/ems/cite-copernicus-ems-mapping-portal>

Relevant date records			
Event	11/07/2017	Situation as of	14/07/2017
Activation	13/07/2017	Map production	15/07/2017